



HOG // CO₂ STUNNING SYSTEM

GAIN FROM OPTIMAL ANIMAL WELFARE AND MEAT QUALITY

The CO₂ stunning system ensures safe stunning of a group of hogs with high animal welfare, high hygiene levels and safety for stunning operators.

Hygiene

With a hygienic design, the CO₂ stunning system meets the strictest demands on hygiene and conforms to the HACCP regulations.

The stunning system is equipped with a wash-down cleaning system. After work has been finished, the cleaning system automatically cleans the outside (and partly the inside of the gondolas), considerably reducing the total time for cleaning. And as all internal machine surfaces are smooth, this also contributes to minimum cleaning time.

Driving mechanisms and sensors are positioned outside the machine to minimize wear and tear and to keep service during break down at a minimum.

Options

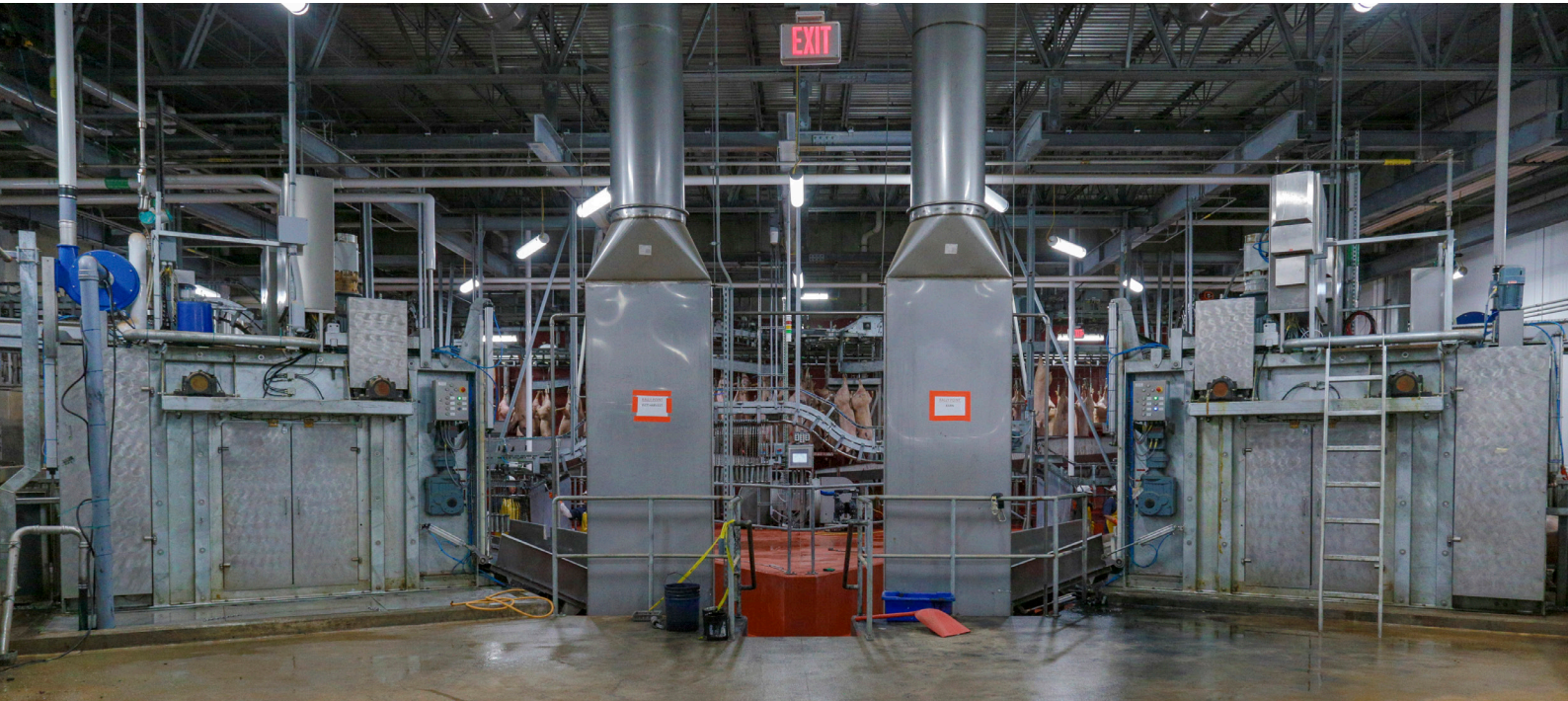
In comparison to a conventional manual runway operation, combining the CO₂ stunning system with the automated runway system results in the following advantages:

- Higher productivity and yield optimization
- Improved meat quality due to improved animal welfare
- Improved work environment with reduction of noise level in the runway area
- Reduction in operators driving hogs to the CO₂ stunning system
- Smooth handling and flow of hogs to the CO₂ stunning system



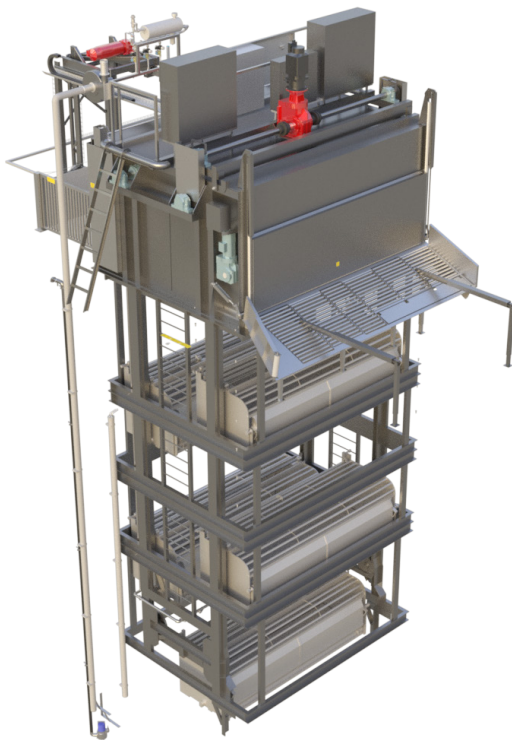
Value for you!

- Improved meat quality ensured by a quick transfer of animals into a controlled CO₂ concentration
- Reduction of stunning operators by use of group wise stunning
- Wash-down cleaning system
- Optimal machine durability and operation time through the latest technology, as it is equipped with a central lubricating system and gondolas moving in an optimum combination of accelerations, speeds and decelerations
- Minimized maintenance and service through easy access to electrical and other vital parts



Safety and legal requirements

The CO₂ stunning system is CE approved and designed in accordance with the EU and USDA regulations to meet the strictest demand on health and safety.



Technical data

Capacity	Varies from 145 to 1,400 hogs per hour depending on type of plant
Dimensions	Length according to type of plant Height and width according to application
CO ₂ Outlet temperature	20-30°C / 68-86°F
CO ₂ Quality	Food grade quality
Consumption Power supply	400V/50Hz/3P Other voltages and frequencies available upon request
Electricity	10-35 kW
Air	0.02-0.035 Nm ³ per hog
CO ₂	200-300g/0.44-0.66 lb per hog

Perk_V1-2_2023_EN

CONTACT

United States
+1 816 891 2440
kansascity@frontmatec.com

Canada
+1 418 885 4493
quebec@frontmatec.com

Denmark
+45 763 427 00
kolding@frontmatec.com

Uruguay
+598 2307 5898
info@asuan.com.uy

Germany
+49 252 185 070
hygiene@frontmatec.com